

TASMANIA

**PROCLAMATION UNDER THE HIGHWAYS ACT
1951 AND THE ROADS AND JETTIES ACT 1935**

STATUTORY RULES 2024, No. 9

I, the Governor in and over the State of Tasmania and its Dependencies in the Commonwealth of Australia, acting with the advice of the Executive Council, by this my proclamation made under section 3 of the *Highways Act 1951* and section 7 of the *Roads and Jetties Act 1935* –

- (a) notify, for the purposes of section 3 of the *Highways Act 1951* –
 - (i) the dedication as a highway of the land of the Crown specified in Part 1 of Schedule 1 to this proclamation; and
 - (ii) that the boundaries of the highway are the boundaries specified in that Part of that Schedule; and
- (b) declare the portions of road specified in Schedule 2 as ceasing to be State highways for the purposes of Part II of the *Roads and Jetties Act 1935*; and

*Highways Act 1951 and the Roads and Jetties Act 1935 –
Proclamation
Statutory Rules 2024, No. 9*

- (c) declare the portions of road specified in Schedule 3 as ceasing to be subsidiary roads for the purposes of Part II of the *Roads and Jetties Act 1935*; and
- (d) revoke the proclamation notified in the *Gazette* as Statutory Rules 1983, No. 234 in its entirety; and
- (e) declare the portions of road specified in Schedule 4 to be State highway for the purposes of Part II of the *Roads and Jetties Act 1935*; and
- (f) declare the portions of road specified in Schedule 5 to be subsidiary roads for the purposes of Part II of the *Roads and Jetties Act 1935*; and
- (g) amend the proclamation notified in the *Gazette* as Statutory Rules 1970, No. 67 by omitting from the First Schedule to that proclamation the item relating to the Midland Highway and substituting the following item:

Midland Highway	From the Brooker Highway at Granton to a point 0.23 kilometres north of Howick Street, Launceston, via the deviation at Pontville, via Campbell Town and via the deviation at Perth	112.14 miles (180.48 kilometres)
-----------------	---	-------------------------------------

- (h) amend the proclamation notified in the *Gazette* as Statutory Rules 1970, No. 67 by omitting from Part I of the Second

*Highways Act 1951 and the Roads and Jetties Act 1935 –
Proclamation
Statutory Rules 2024, No. 9*

Schedule to that proclamation the items relating to the Evandale Main Road and Illawarra Main Road and inserting the following items in their correct alphabetical positions:

Evandale	From the Midland Highway at the Breadalbane Roundabout, including the south-west spur extending 160 metres to the start of the Midland Highway southbound on-ramp, to the north-western boundary of Russell Street, Evandale via Western Junction	4.33 miles (6.98 kilometres)
Glenstone	From the junction of the Midland Highway and Weily Park Road through to the Midland Highway Roundabout connecting to Brighton Road	2.37 miles (3.83 kilometres)
Illawarra	From the Midland Highway at Perth, at a point approximately 336 metres east of the junction of Pateena Road and Illawarra Road, to the Meander Valley Secondary Road	8.0 miles (12.89 kilometres)

- (i) amend the proclamation notified in the *Gazette* as Statutory Rules 1970, No. 67 by omitting from Part II of the Second Schedule to that proclamation the item relating to the Tea Tree Secondary Road and substituting the following item:

*Highways Act 1951 and the Roads and Jetties Act 1935 –
Proclamation
Statutory Rules 2024, No. 9*

Tea Tree	From a point approximately 226 metres east of the junction of Derwent Street and Tea Tree Road to its junction with Colebrook Main Road near Campania, via Tea Tree	9.02 miles (14.521 kilometres)
----------	---	-----------------------------------

- (j) declare that this proclamation takes effect on the day on which its making is notified in the *Gazette*.

Dated 13 February 2024.

B. BAKER
Governor

By Her Excellency's Command,

MICHAEL DARREL JOSEPH FERGUSON
Minister for Infrastructure and Transport

*Highways Act 1951 and the Roads and Jetties Act 1935 –
Proclamation
Statutory Rules 2024, No. 9*

sch. 1

**SCHEDULE 1 – DEDICATION OF CROWN LAND AS
HIGHWAY**

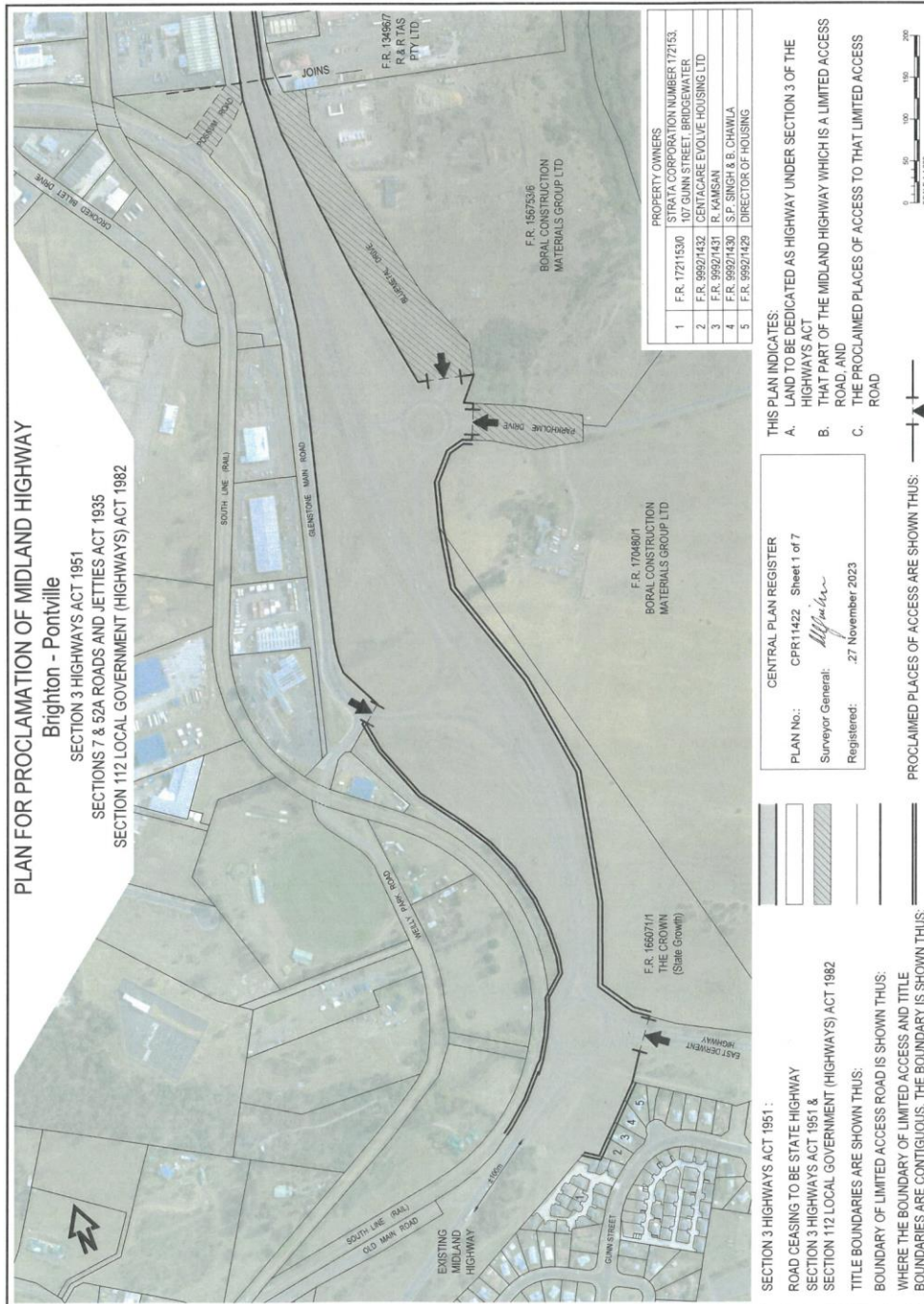
PART 1 – DESCRIPTION

From a point on the existing Midland Highway approximately 100 metres north-east of its junction with Old Main Road, Bridgewater through to the existing Midland Highway at the roundabout at Pontville, via the Brighton-Pontville bypass and including the Brighton Interchange and the Tea Tree Road Interchange comprising the area of land shown shaded in grey on Plan No. 11422, Sheets 1 to 7, in the Central Plan Register, a reduced copy of which is set out, by way of illustration only, in Part 2 of Schedule 1 to this proclamation.

*Highways Act 1951 and the Roads and Jetties Act 1935 –
Proclamation
Statutory Rules 2024, No. 9*

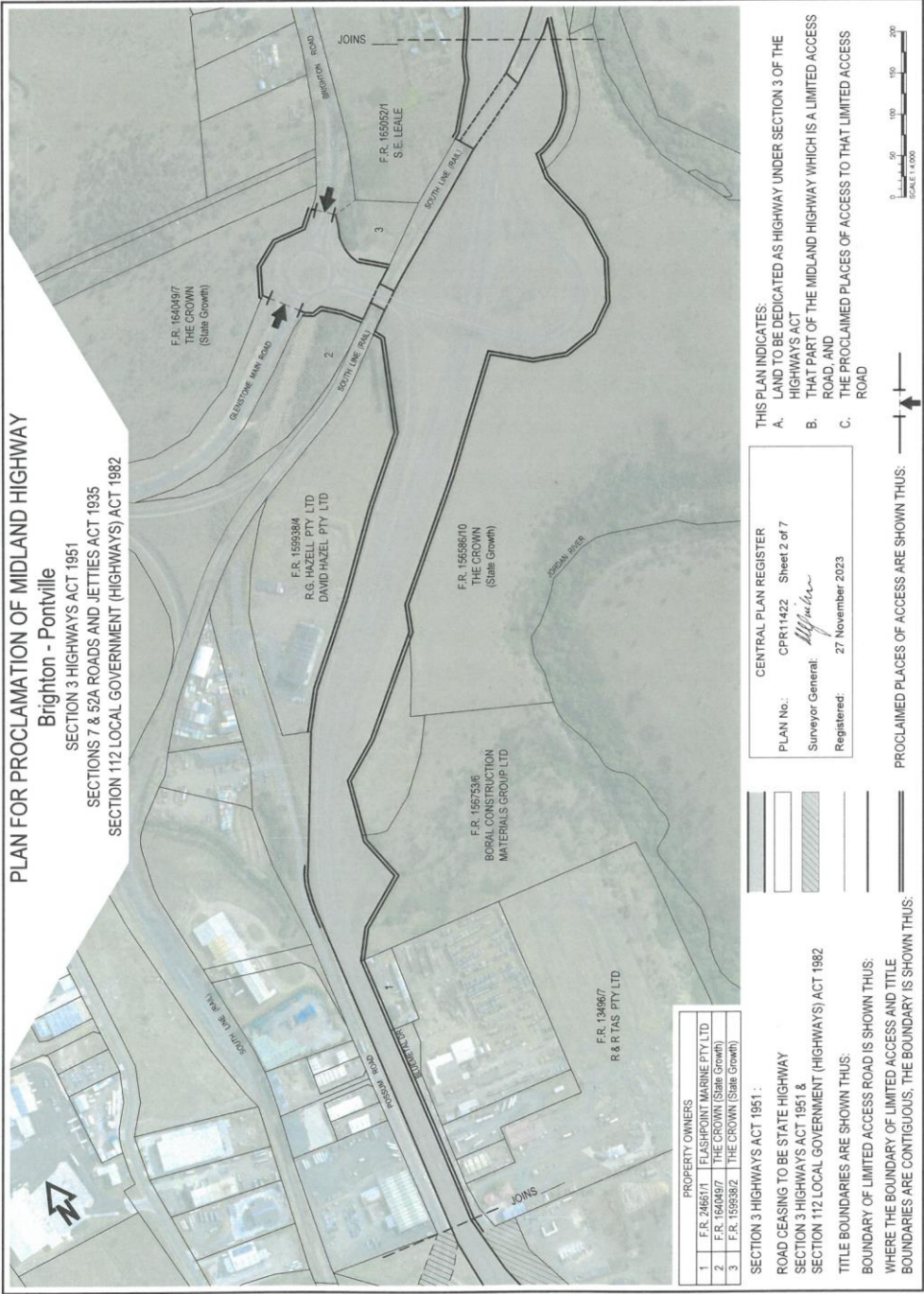
sch. 1

PART 2 – PLANS



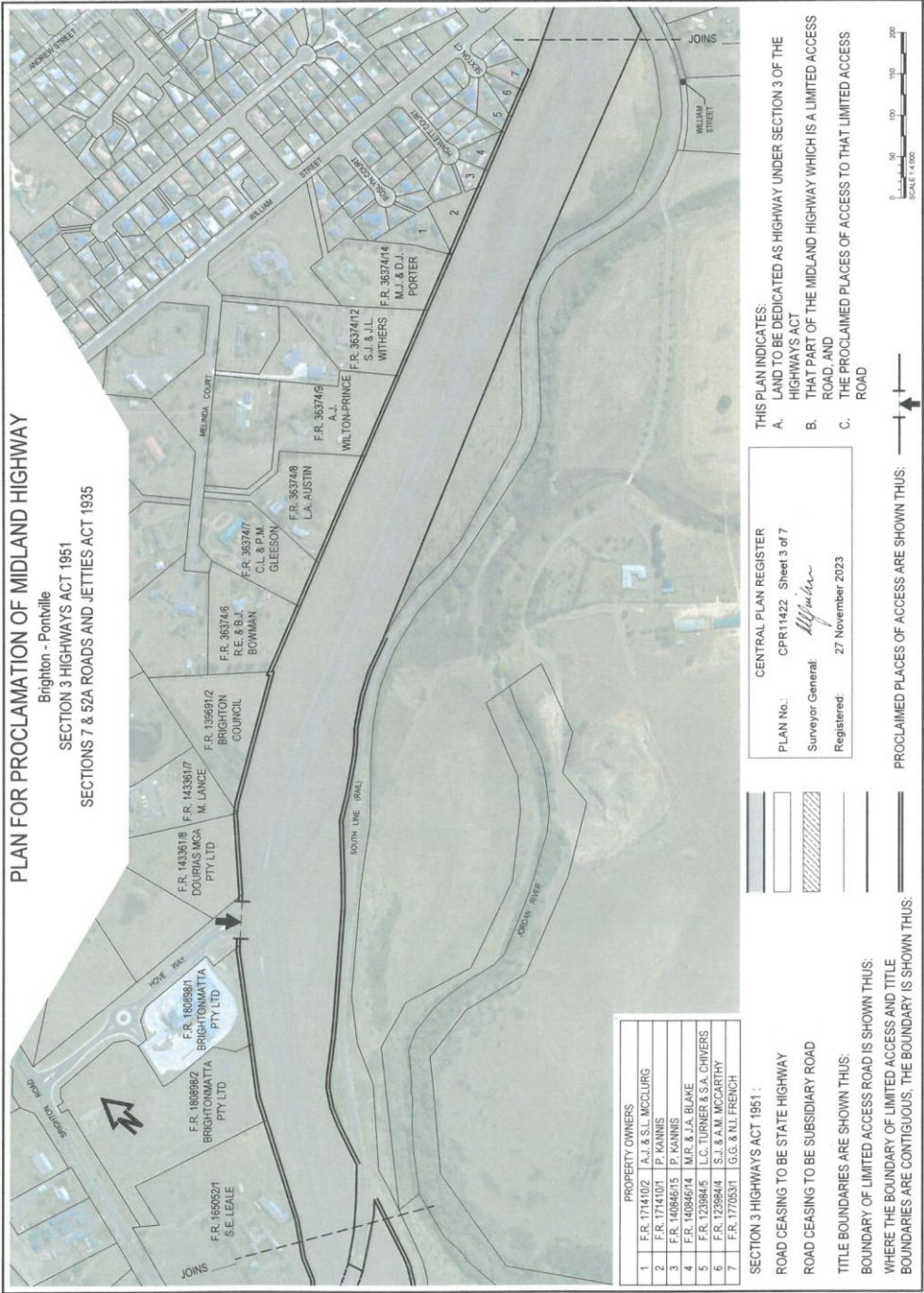
Highways Act 1951 and the Roads and Jetties Act 1935 –
Proclamation
Statutory Rules 2024, No. 9

sch. 1



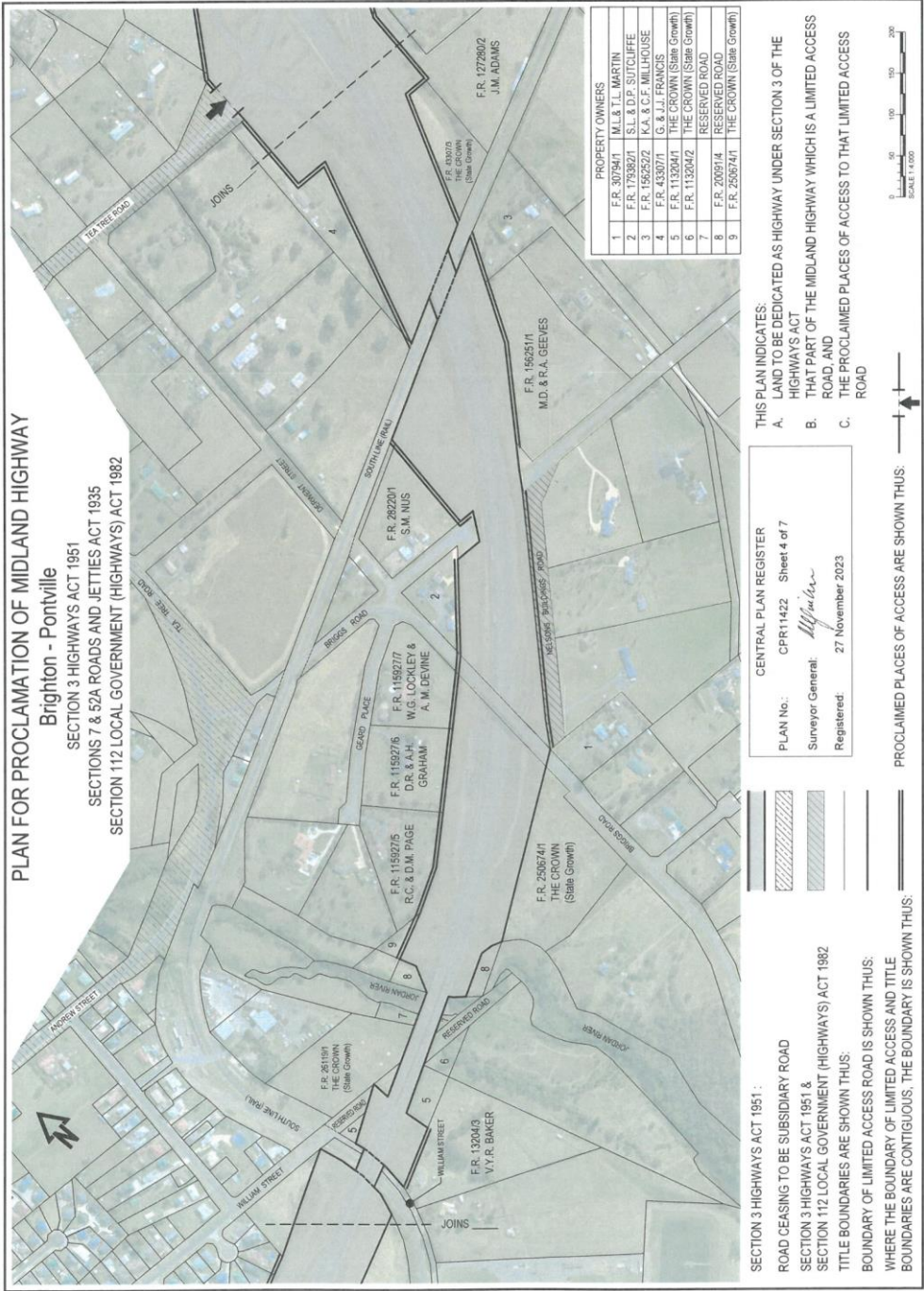
Highways Act 1951 and the Roads and Jetties Act 1935 –
Proclamation
Statutory Rules 2024, No. 9

sch. 1



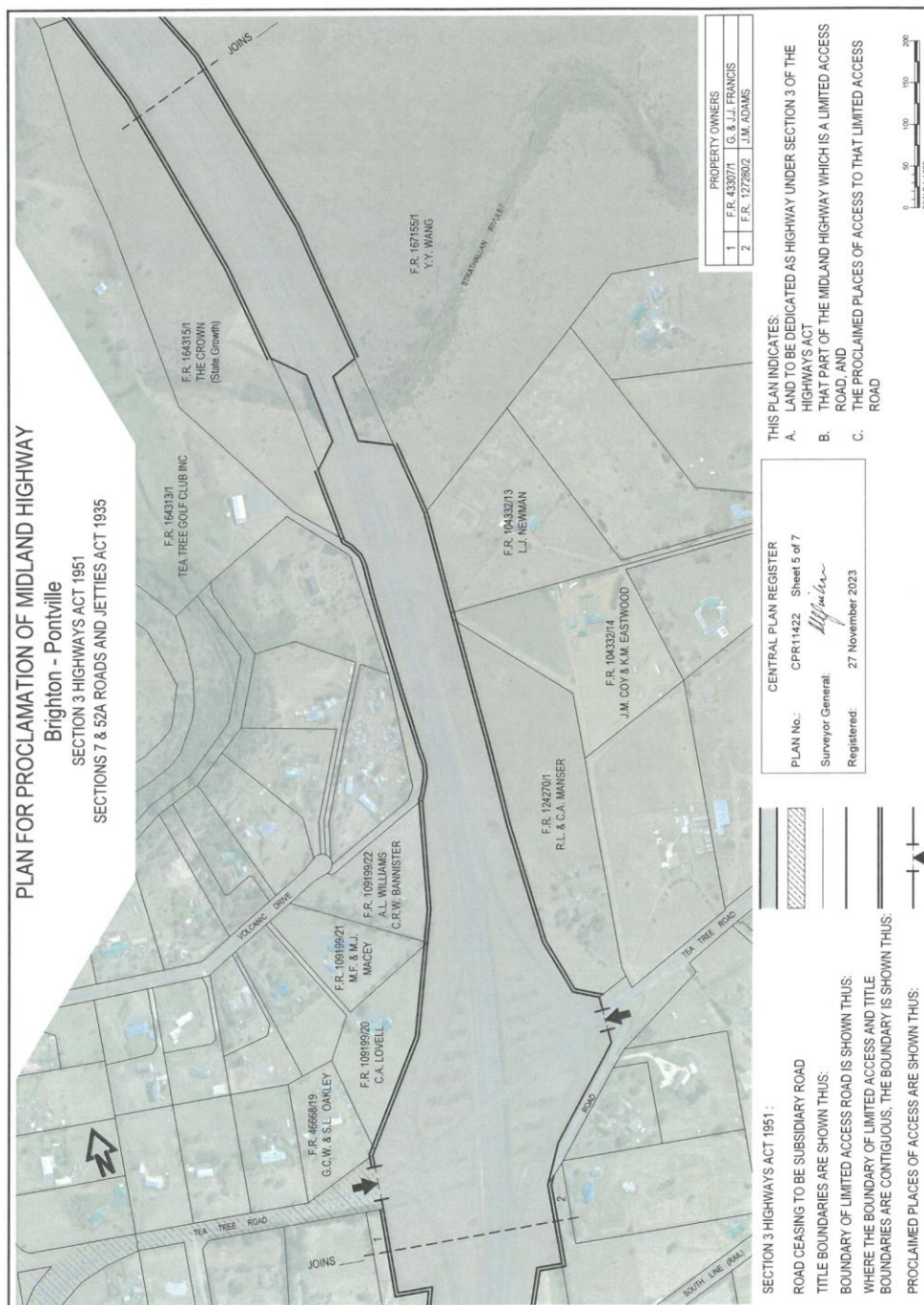
Highways Act 1951 and the Roads and Jetties Act 1935 –
Proclamation
Statutory Rules 2024, No. 9

sch. 1



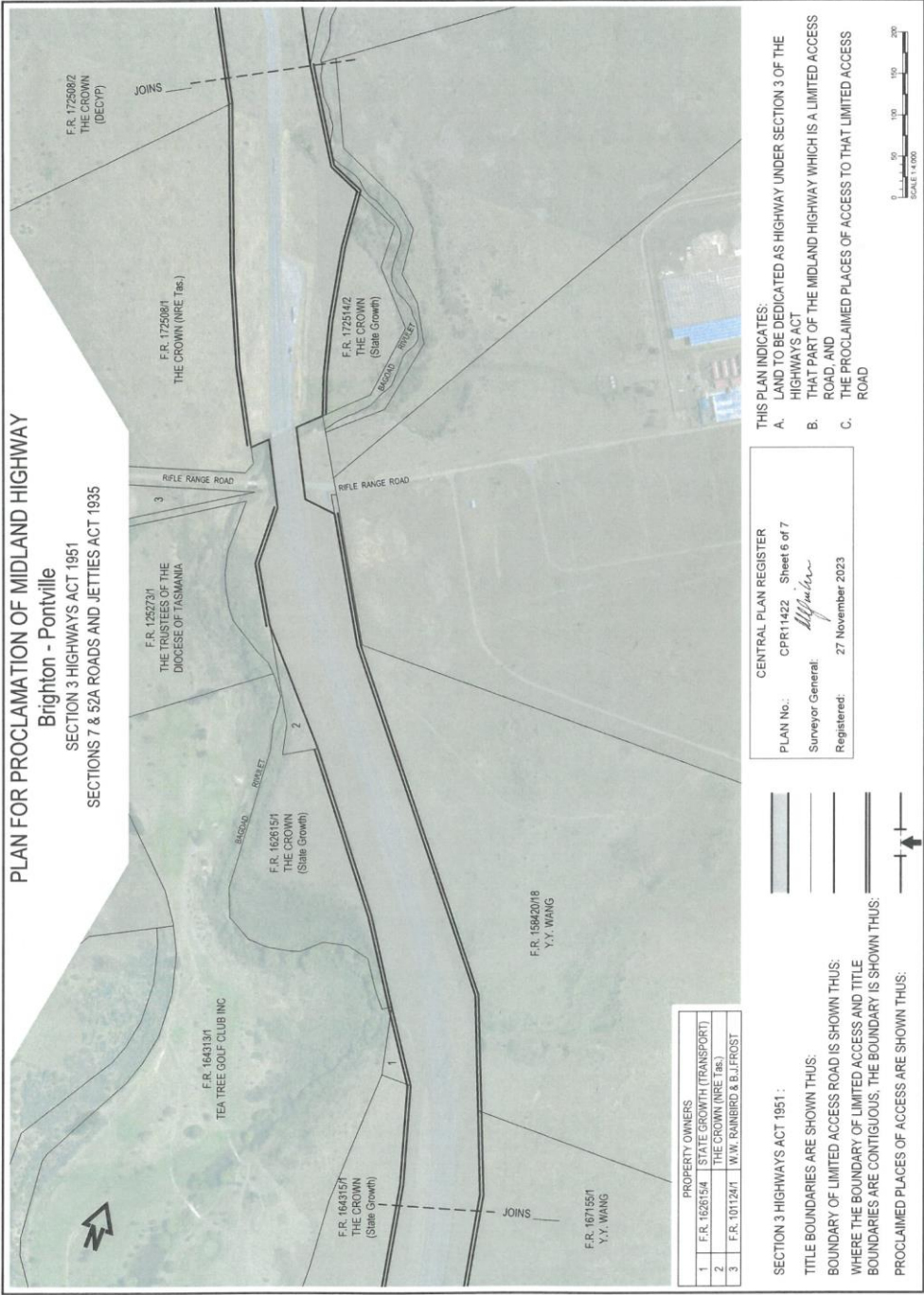
Highways Act 1951 and the Roads and Jetties Act 1935 – Proclamation Statutory Rules 2024, No. 9

sch. 1



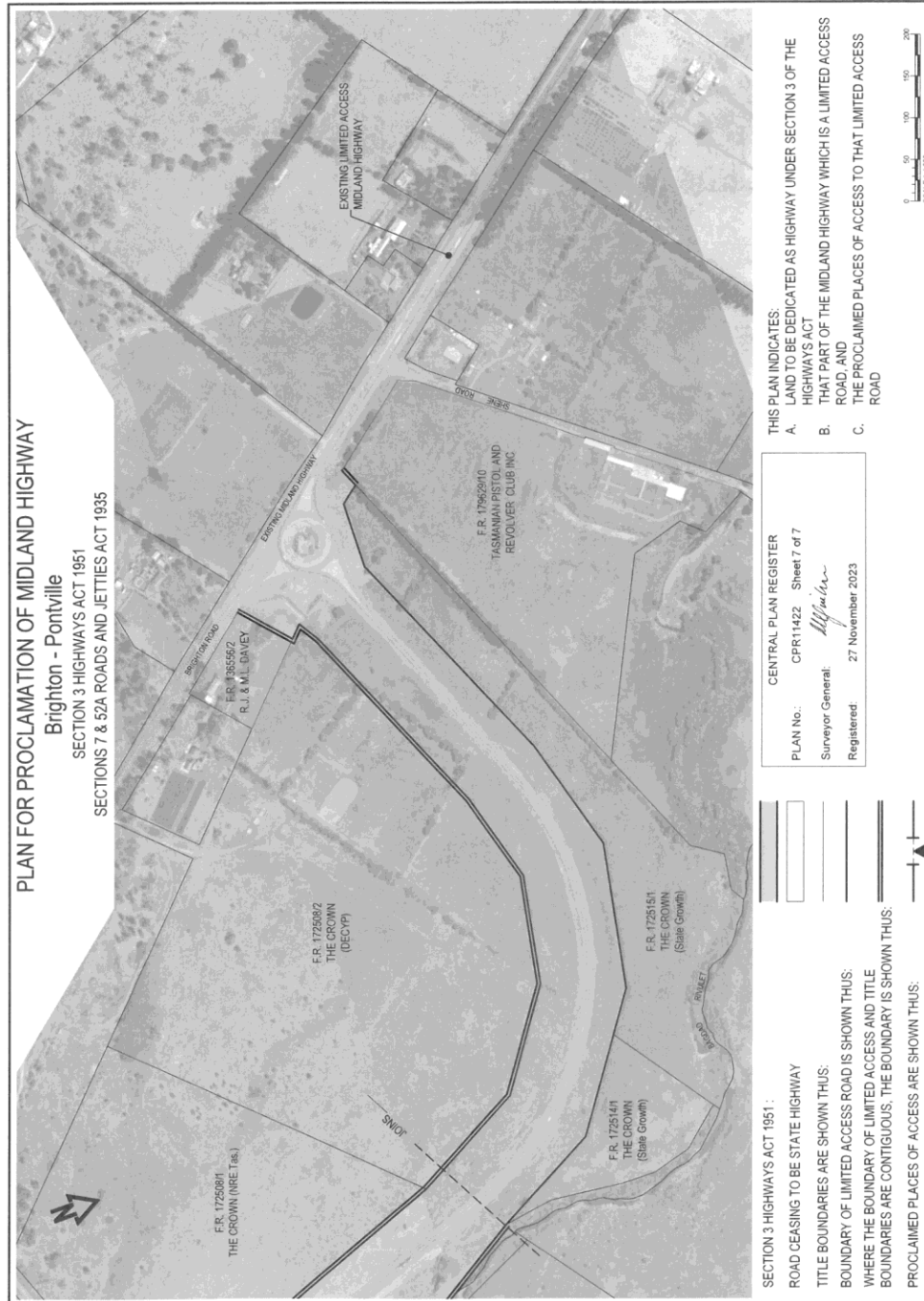
Highways Act 1951 and the Roads and Jetties Act 1935 –
Proclamation
Statutory Rules 2024, No. 9

sch. 1



Highways Act 1951 and the Roads and Jetties Act 1935 – Proclamation Statutory Rules 2024, No. 9

sch. 1



*Highways Act 1951 and the Roads and Jetties Act 1935 –
Proclamation
Statutory Rules 2024, No. 9*

sch. 2

**SCHEDULE 2 – PORTIONS OF ROADS CEASING TO
BE STATE HIGHWAYS**

Name	Description	Length in kilometres
Midland Highway	From the vicinity of the East Derwent Highway roundabout to the Pontville Roundabout via Brighton	7.31

*Highways Act 1951 and the Roads and Jetties Act 1935 –
Proclamation
Statutory Rules 2024, No. 9*

sch. 3

**SCHEDULE 3 – PORTIONS OF ROADS CEASING TO
BE SUBSIDIARY ROADS**

Name	Description	Length in kilometres
Illawarra Main Road	From Main Road in Perth to a point approximately 336 metres east of its junction with Pateena Road, via Drummond Street and Oakmount Street	2.57
Youl Main Road	Youl Road from its intersection with Main Road to its intersection with Drummond Street	1.30
Tea Tree Secondary Road	From its junction with Brighton Road to a point approximately 226 metres east of its junction with Derwent Street	2.16

*Highways Act 1951 and the Roads and Jetties Act 1935 –
Proclamation
Statutory Rules 2024, No. 9*

sch. 4

**SCHEDULE 4 – PORTIONS OF ROAD DECLARED TO
BE STATE HIGHWAY**

Name	Description	Length in kilometres
Midland Highway	From a point approximately 100 metres north-east of its junction with Old Main Road at Bridgewater through to its junction with the existing Midland Highway at Pontville, including the roundabout at Pontville	9.672
Midland Highway	From the roundabout at the southern entrance to Perth to a point approximately 700 metres north of the northern abutment of the Midland Highway overpass over the Evandale Road Interchange at Breadalbane	4.368

*Highways Act 1951 and the Roads and Jetties Act 1935 –
Proclamation
Statutory Rules 2024, No. 9*

sch. 5

**SCHEDULE 5 – PORTIONS OF ROADS DECLARED
TO BE SUBSIDIARY ROADS**

Name	Description	Length in kilometres
Evandale Main Road	From a point approximately 311 metres south-west of its junction with Hobart Road to its junction with Hobart Road	0.311
Glenstone Main Road	From the junction of the Midland Highway and Weily Park Road to the Midland Highway roundabout intersection with Brighton Road	3.869

*Highways Act 1951 and the Roads and Jetties Act 1935 –
Proclamation
Statutory Rules 2024, No. 9*

Printed and numbered in accordance with the *Rules Publication Act 1953*.

Notified in the *Gazette* on 21 February 2024.

This proclamation is administered in the Department of State Growth.

EXPLANATORY NOTE

(This note is not part of the proclamation)

This proclamation, under section 3 of the *Highways Act 1951* and section 7 of the *Roads and Jetties Act 1935* –

- (a) notifies the dedication of a highway, and the boundaries of that highway, being the Midland Highway; and
- (b) declares certain portions of road as ceasing to be State highway; and
- (c) declares certain portions of road as ceasing to be subsidiary roads; and
- (d) declares certain portions of road as State highway; and
- (e) declares certain portions of road as subsidiary roads; and
- (f) amends the proclamation notified in the *Gazette* as Statutory Rules 1970, No. 67.