

TASMANIA

**PROCLAMATION UNDER THE HIGHWAYS ACT
1951 AND THE ROADS AND JETTIES ACT 1935**

STATUTORY RULES 2024, No. 52

I, the Governor in and over the State of Tasmania and its Dependencies in the Commonwealth of Australia, acting with the advice of the Executive Council, by this my proclamation made under section 3 of the *Highways Act 1951* and section 7 of the *Roads and Jetties Act 1935* –

- (a) notify, for the purposes of section 3 of the *Highways Act 1951* –
 - (i) the dedication as a highway of the land of the Crown specified in Part 1 of Schedule 1 to this proclamation; and
 - (ii) that the boundaries of the highway are the boundaries specified in that Part of that Schedule; and
- (b) declare the portions of road specified in Schedule 2 to this proclamation to be a State highway for the purposes of Part II of the *Roads and Jetties Act 1935*; and

*Highways Act 1951 and the Roads and Jetties Act 1935 –
Proclamation
Statutory Rules 2024, No. 52*

- (c) declare that the portion of road specified in Schedule 3 to this proclamation ceases to be a State highway for the purposes of Part II of the *Roads and Jetties Act 1935*; and
- (d) amend the proclamation notified in the *Gazette* as Statutory Rules 1970, No. 67 by omitting from the First Schedule to that proclamation the item relating to the East Tamar Highway and substituting the following item:

<i>Road</i>	<i>Definition</i>	<i>Distance</i>
East Tamar Highway	From the southern abutment of Charles Street Bridge at Launceston, to the southern town boundary of George Town, via Goderich Street at Invermay, the deviation at Dilston, Mount Direction and Long Reach, to the Mowbray Link and the Batman interchange.	28.97 miles (46.62 kilometres)

- (e) revoke the following proclamations, to the extent that the proclamation relates to the East Tamar Highway:
 - (i) the proclamation notified in the *Gazette* as Statutory Rules 1982, No. 42;
 - (ii) the proclamation notified in the *Gazette* as Statutory Rules 1993, No. 232; and

*Highways Act 1951 and the Roads and Jetties Act 1935 –
Proclamation
Statutory Rules 2024, No. 52*

- (f) declare that this proclamation takes effect on the day on which its making is notified in the *Gazette*.

Dated 9 September 2024.

B. BAKER
Governor

By Her Excellency's Command,

JEREMY ROCKLIFF
Minister for Infrastructure and for and on behalf of the Minister for
Transport

*Highways Act 1951 and the Roads and Jetties Act 1935 –
Proclamation
Statutory Rules 2024, No. 52*

sch. 1

**SCHEDULE 1 – DEDICATION OF CROWN LAND AS
HIGHWAY**

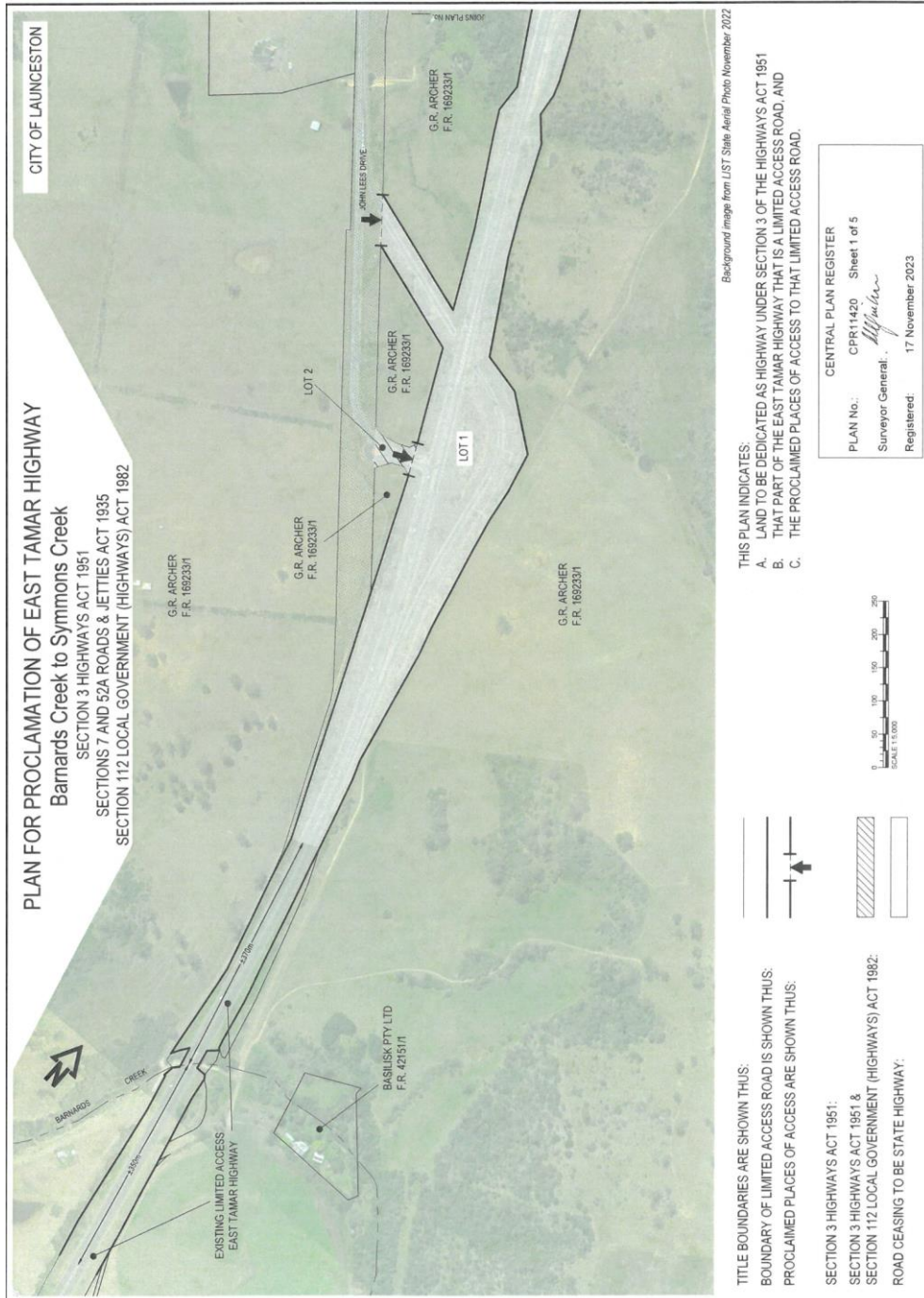
PART 1 – DESCRIPTION

From a point on the existing East Tamar Highway approximately 0.367 kilometres north of the centre of Barnards Creek Bridge to a point on the existing East Tamar Highway approximately 0.387 kilometres north of its intersection with John Lees Drive (northern junction), shown as Lot 1, shaded in grey and bounded by heavy black lines, on Plan 11420 in the Central Plan Register, a reduced copy of which is set out, by way of illustration only, in Part 2 of Schedule 1 to this proclamation.

*Highways Act 1951 and the Roads and Jetties Act 1935 –
Proclamation
Statutory Rules 2024, No. 52*

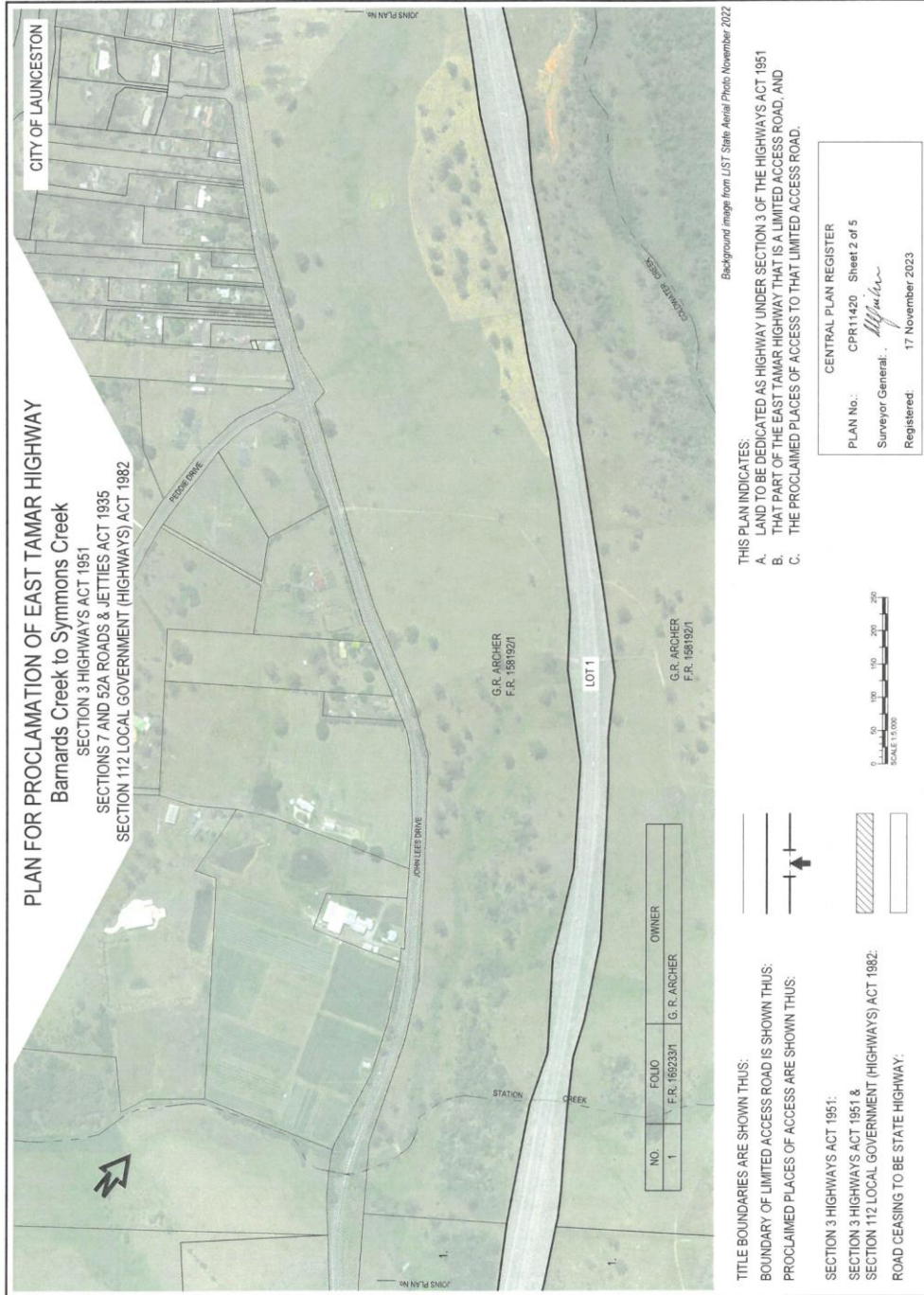
sch. 1

PART 2 – PLAN



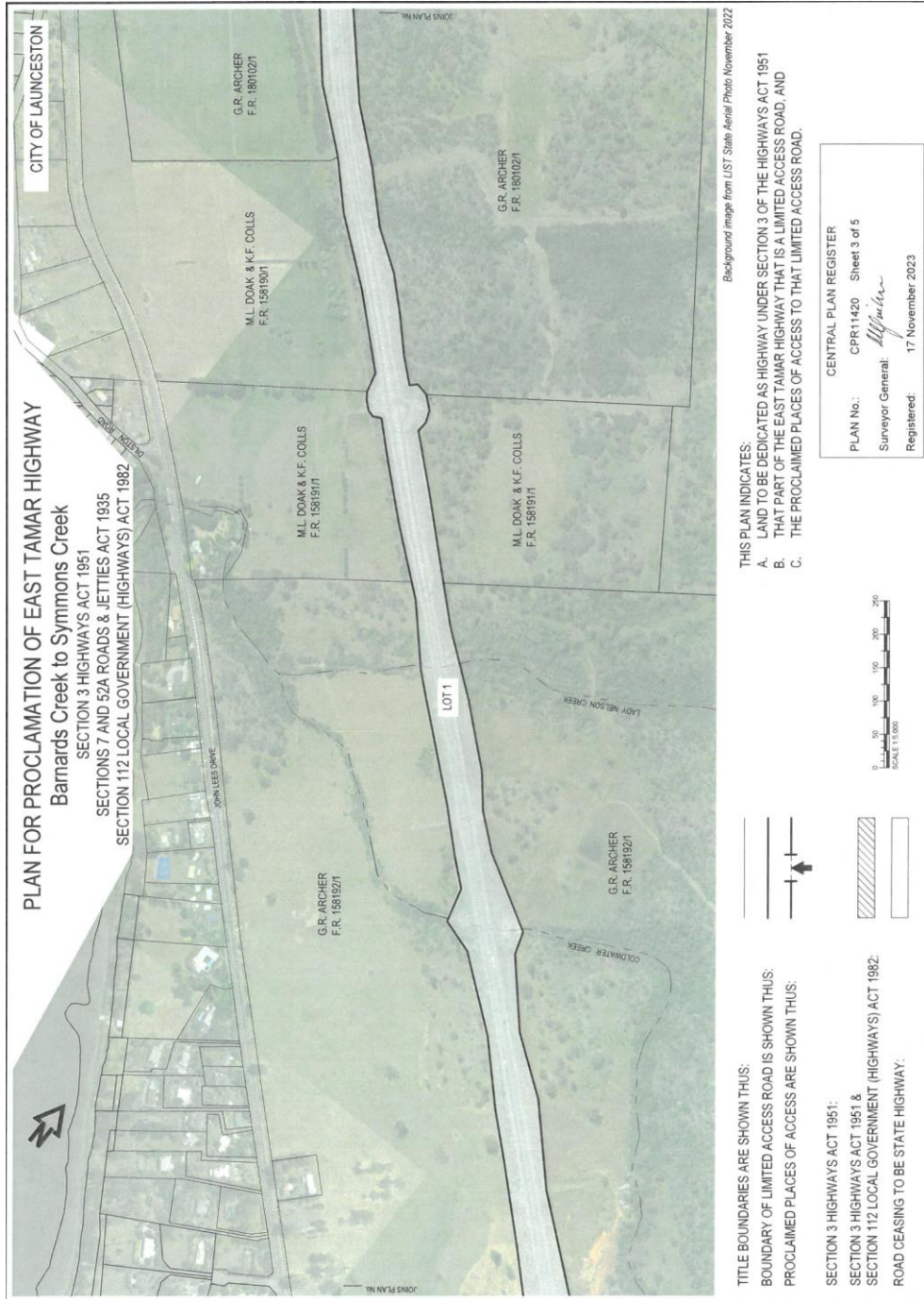
*Highways Act 1951 and the Roads and Jetties Act 1935 –
Proclamation
Statutory Rules 2024, No. 52*

sch. 1



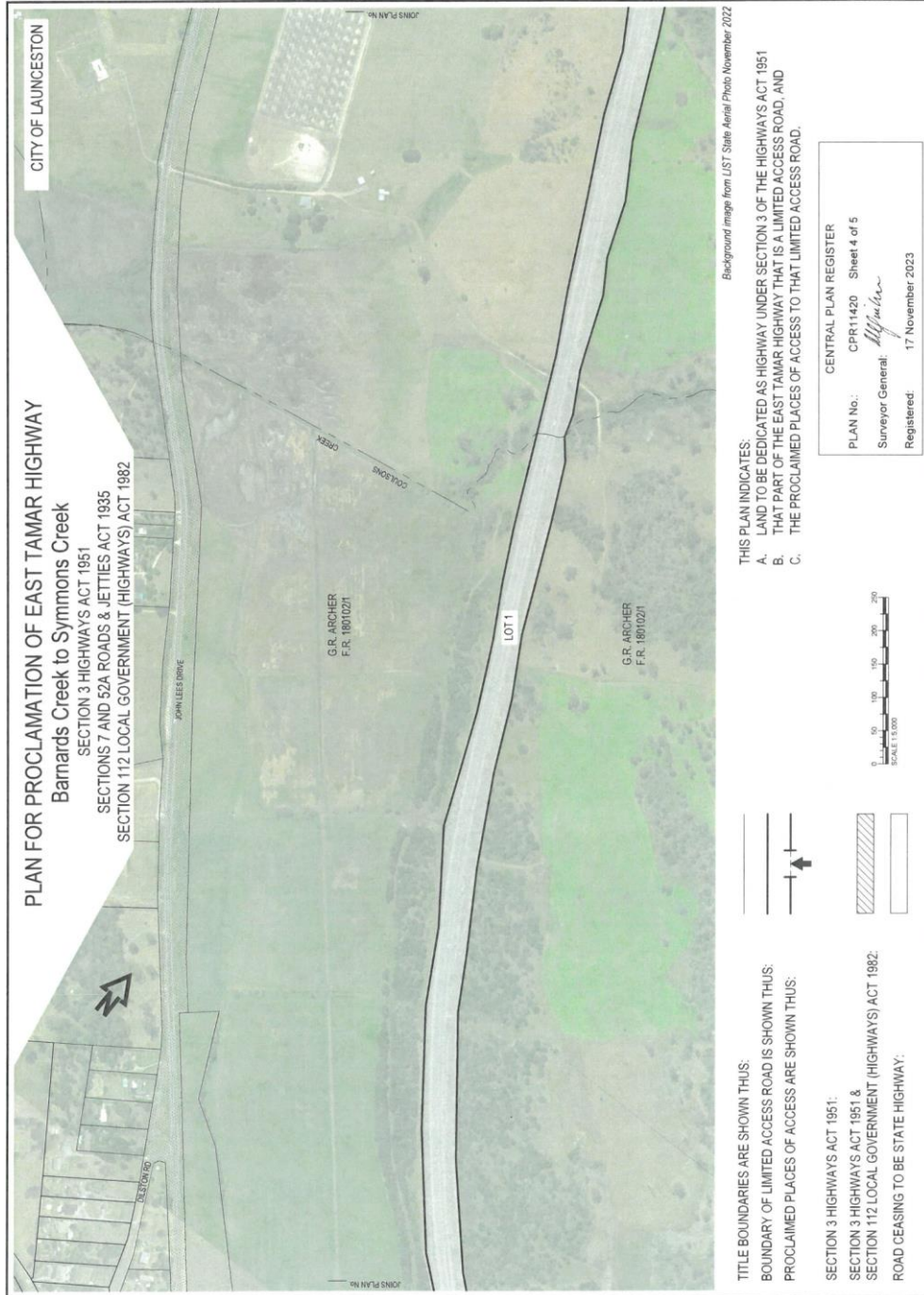
*Highways Act 1951 and the Roads and Jetties Act 1935 –
Proclamation
Statutory Rules 2024, No. 52*

sch. 1



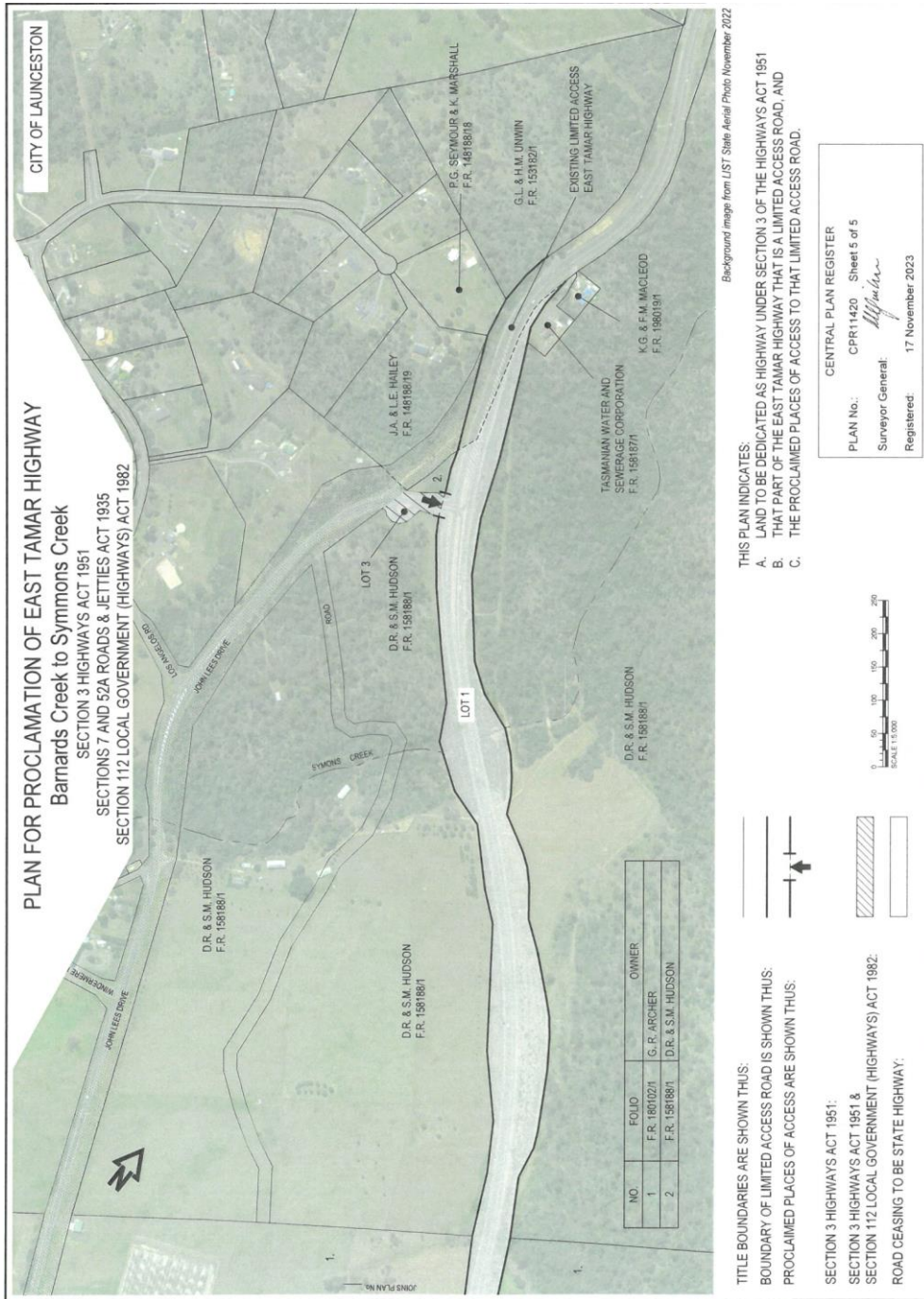
*Highways Act 1951 and the Roads and Jetties Act 1935 –
Proclamation
Statutory Rules 2024, No. 52*

sch. 1



*Highways Act 1951 and the Roads and Jetties Act 1935 –
Proclamation
Statutory Rules 2024, No. 52*

sch. 1



*Highways Act 1951 and the Roads and Jetties Act 1935 –
Proclamation
Statutory Rules 2024, No. 52*

sch. 2

**SCHEDULE 2 – PORTIONS OF ROAD DECLARED
STATE HIGHWAY**

Name	Description	Length in kilometres
East Tamar Highway	(a) From the southern abutment of the Charles Street Bridge at Launceston to the northern abutment of the Charles Street Bridge in Launceston	0.12
	(b) From a point on the existing East Tamar Highway approximately 0.370 kilometres north of the centre of Barnards Creek Bridge to a point on the existing East Tamar Highway approximately 0.387 kilometres north of its intersection with John Lees Drive (northern junction), shown as shaded grey on Plan 11420 in the Central Plan Register, a reduced copy of which is set out, by way of illustration only, in Part 2 of Schedule 1 to this proclamation.	8.32

*Highways Act 1951 and the Roads and Jetties Act 1935 –
Proclamation
Statutory Rules 2024, No. 52*

sch. 3

**SCHEDULE 3 – PORTION OF ROAD CEASING TO BE
STATE HIGHWAY**

Name	Description	Length in kilometres
East Tamar Highway	From the existing East Tamar Highway at a point approximately 0.335 kilometres north of the centre of Barnards Creek Bridge to a point approximately 0.800 kilometres north of the centre of Symons Creek Bridge, via Dilston, shown as the area marked by stippling on Plan 11420 in the Central Plan Register, a reduced copy of which is set out, by way of illustration only, in Part 2 of Schedule 1 to this proclamation.	8.28

*Highways Act 1951 and the Roads and Jetties Act 1935 –
Proclamation
Statutory Rules 2024, No. 52*

Printed and numbered in accordance with the *Rules Publication Act 1953*.

Notified in the *Gazette* on 18 September 2024.

This proclamation is administered in the Department of State Growth.

EXPLANATORY NOTE

(This note is not part of the proclamation)

This proclamation –

- (a) notifies, under the *Highways Act 1951*, certain matters in respect of land relating to the East Tamar Highway; and
- (b) declares certain portions of roads to be, or cease to be, part of the State highway known as the East Tamar Highway; and
- (c) amends an earlier proclamation (S.R. 1970, No. 67) by amending the definition of the East Tamar Highway; and
- (d) revokes in whole, or partially, certain spent proclamations in respect of the East Tamar Highway.