

TASMANIA

**PROCLAMATION UNDER THE ROADS AND
JETTIES ACT 1935**

STATUTORY RULES 2024, No. 51

I, the Governor in and over the State of Tasmania and its Dependencies in the Commonwealth of Australia, acting with the advice of the Executive Council, by this my proclamation made under section 52A of the *Roads and Jetties Act 1935* –

- (a) declare the portion of the East Tamar Highway specified in Part 1 of Schedule 1 to this proclamation to be a limited access road; and
- (b) declare that the portions of the East Tamar Highway specified in Schedule 2 to this proclamation cease to be limited access roads; and
- (c) declare the places set forth in Schedule 3 to this proclamation to be places of access for the purposes of section 52B of the *Roads and Jetties Act 1935*; and
- (d) amend the proclamation notified in the *Gazette* as Statutory Rules 1979 No. 153 by omitting Schedule 1 to that proclamation and substituting the following Schedule:

Roads and Jetties Act 1935 – Proclamation
Statutory Rules 2024, No. 51

**SCHEDULE 1 – EAST TAMAR HIGHWAY –
LIMITED ACCESS ROAD**

Definition	Length in kilometres
From a point on the existing East Tamar Highway approximately 0.350 kilometres south of the Barnards Creek Bridge to a point approximately 0.320 kilometres north of the junction of John Lees Drive and the existing East Tamar Highway, shown as bounded by heavy black lines on Plan 11420 in the Central Plan Register, and from that point to the junction with Dalrymple Road at Mount Direction, shown as bounded by heavy black lines on Plan 11421 in the Central Plan Register.	15.94

- (e) amend the proclamation notified in the *Gazette* as Statutory Rules 1979, No. 153 by omitting Schedule 2 to that proclamation; and
- (f) revoke the proclamation notified in the *Gazette* as Statutory Rules 1987, No. 62; and
- (g) declare that this proclamation takes effect on the day on which its making is notified in the *Gazette*.

Roads and Jetties Act 1935 – Proclamation
Statutory Rules 2024, No. 51

Dated 9 September 2024.

B. BAKER
Governor

By Her Excellency's Command,

JEREMY ROCKLIFF
Minister for Infrastructure

Roads and Jetties Act 1935 – Proclamation
Statutory Rules 2024, No. 51

sch. 1

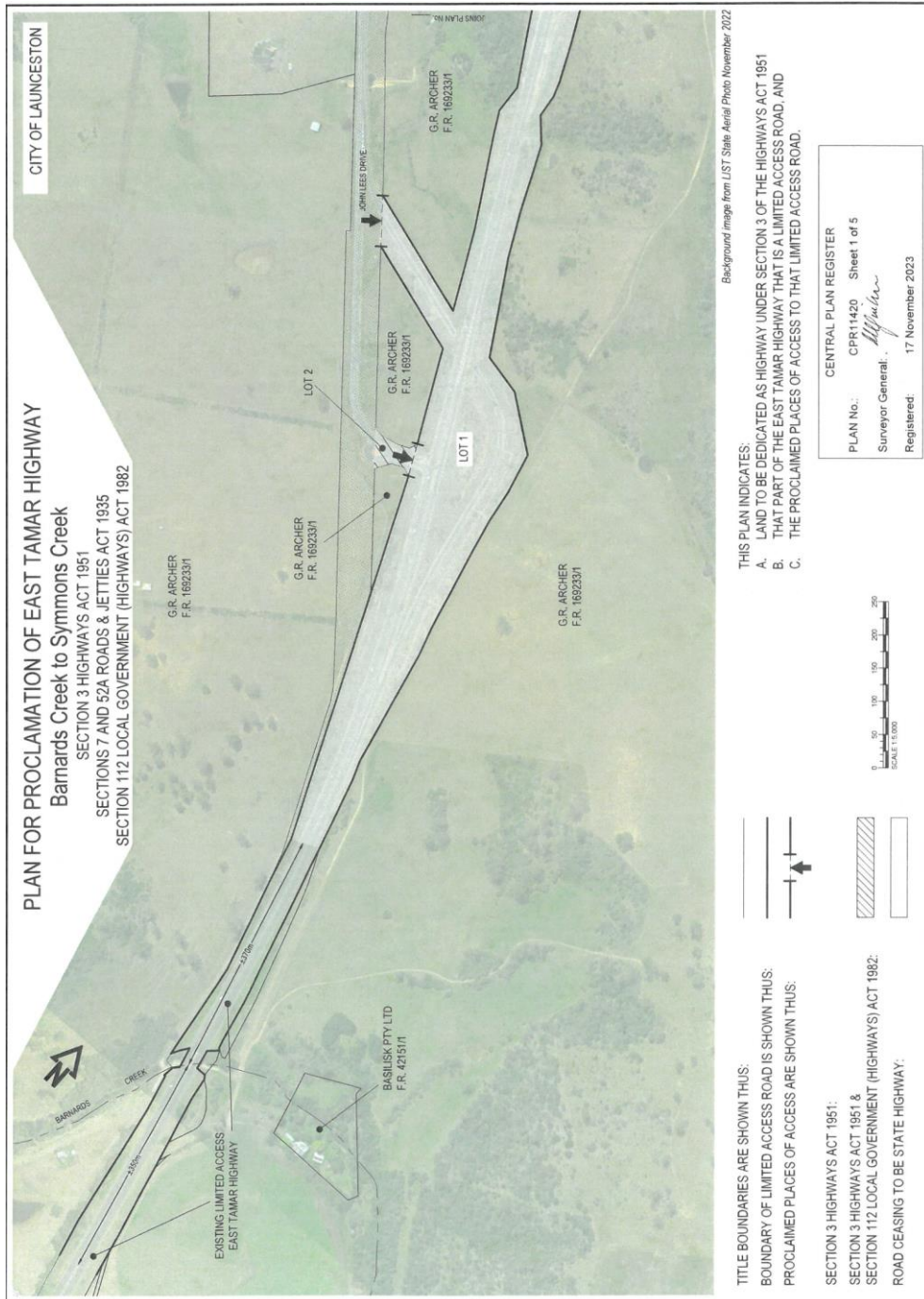
**SCHEDULE 1 – EAST TAMAR HIGHWAY – LIMITED
ACCESS ROAD**

PART 1 – DESCRIPTION	
Definition	Length in kilometres
From a point on the existing East Tamar Highway approximately 0.370 kilometres north of the centre of Barnards Creek Bridge to a point approximately 0.390 kilometres north of the northern junction of John Lees Drive and the existing East Tamar Highway, shown as bounded by heavy black lines on Plan 11420 in the Central Plan Register, a reduced copy of which is set out, by way of illustration only, in Part 2 of Schedule 1 to this proclamation.	8.31

*Roads and Jetties Act 1935 – Proclamation
Statutory Rules 2024, No. 51*

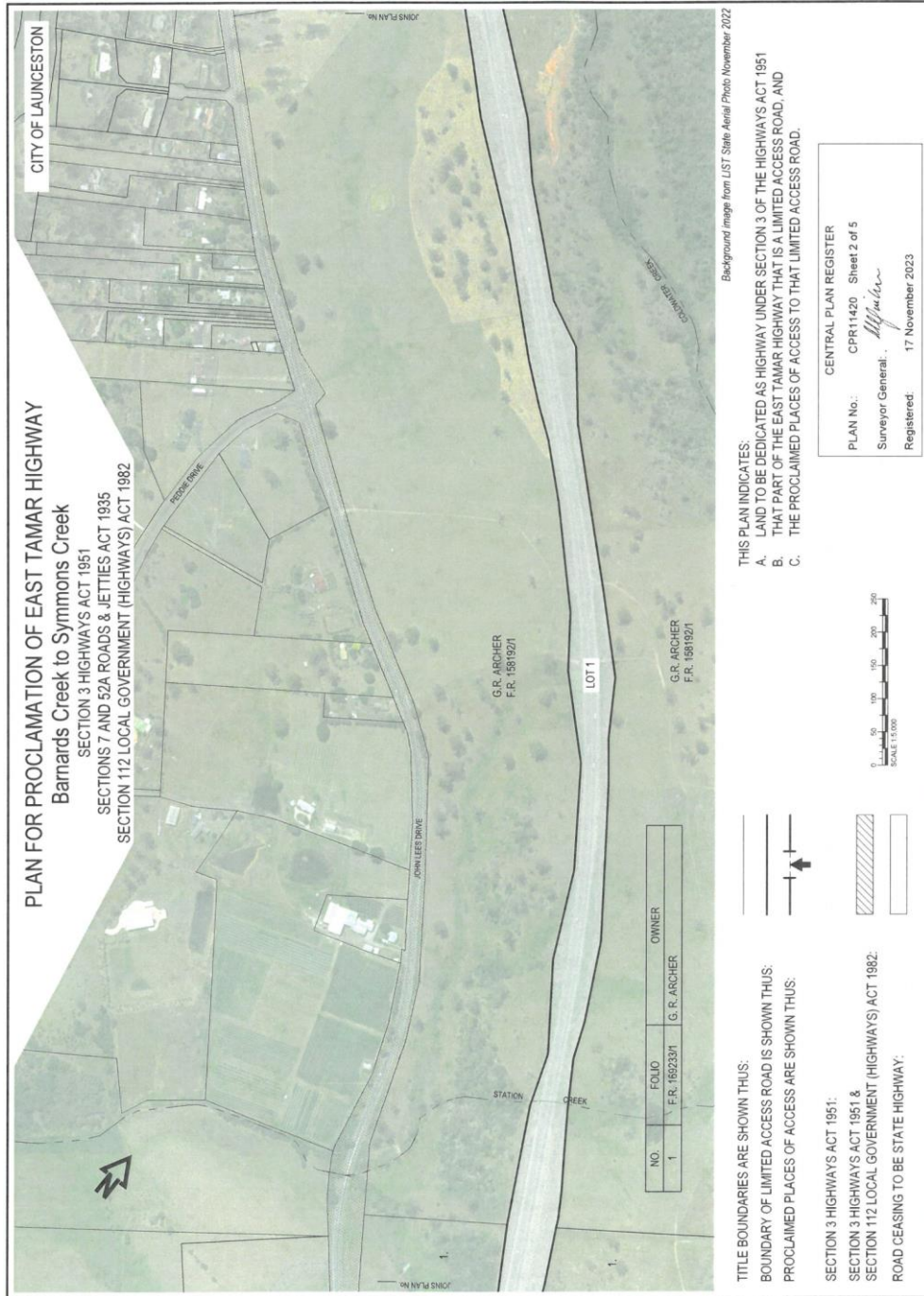
sch. 1

PART 2 – PLAN



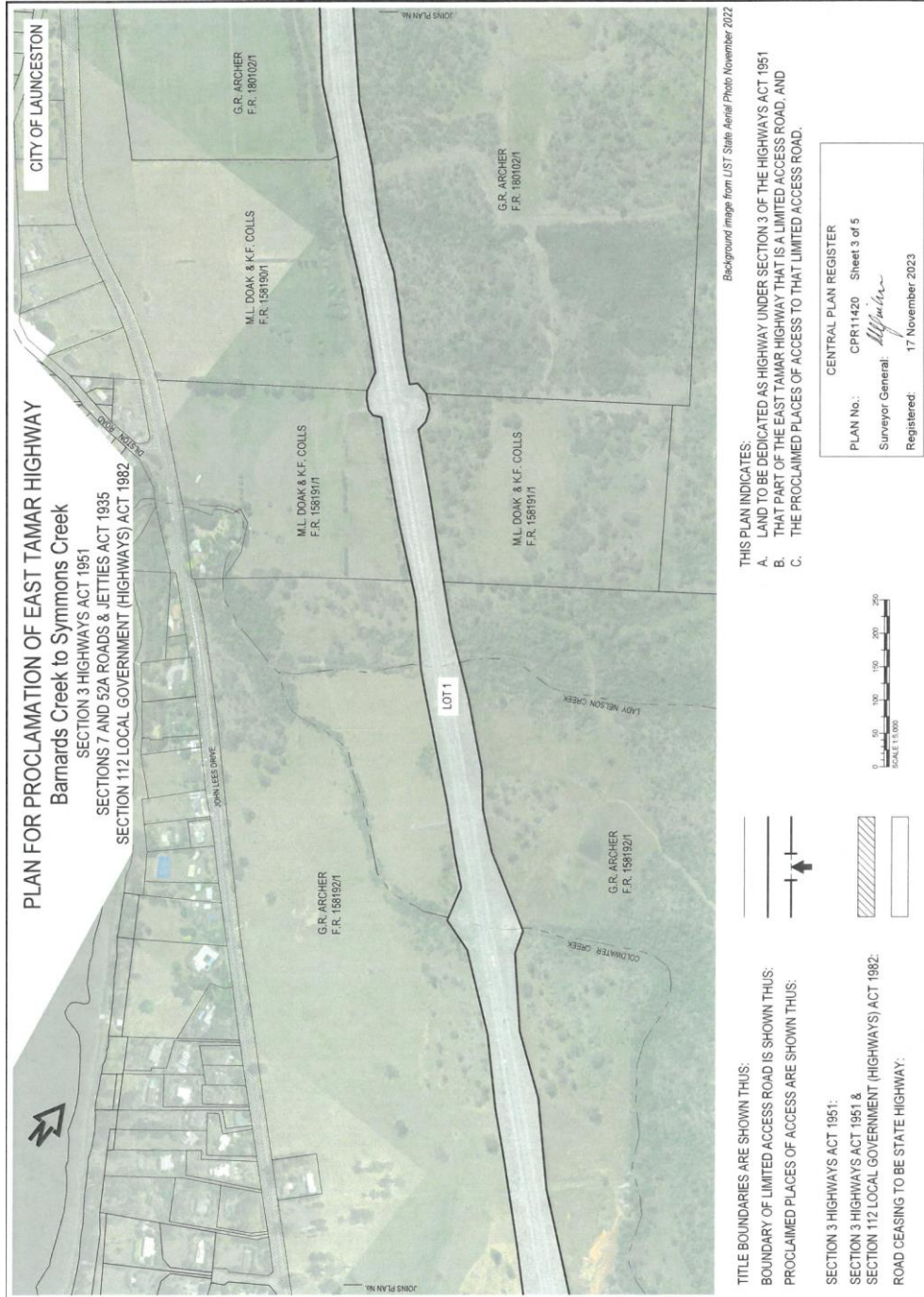
Roads and Jetties Act 1935 – Proclamation Statutory Rules 2024, No. 51

sch. 1



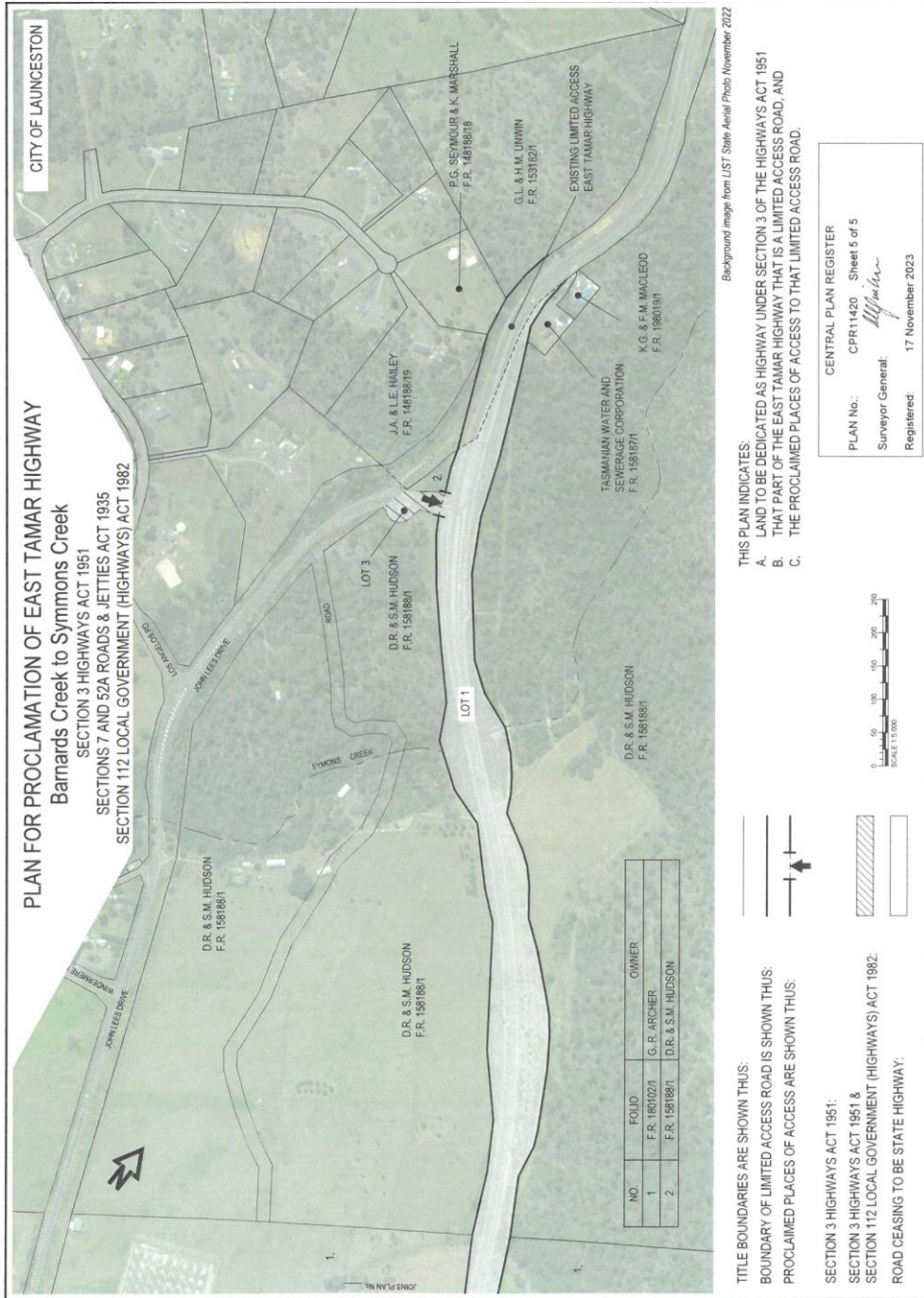
*Roads and Jetties Act 1935 – Proclamation
Statutory Rules 2024, No. 51*

sch. 1



Roads and Jetties Act 1935 – Proclamation Statutory Rules 2024, No. 51

sch. 1



Roads and Jetties Act 1935 – Proclamation
Statutory Rules 2024, No. 51

sch. 2

**SCHEDULE 2 – EAST TAMAR HIGHWAY –
PORTIONS OF ROAD CEASING TO BE LIMITED
ACCESS ROADS**

Definition	Length in kilometres
(a) From the southern junction of John Lees Drive with the East Tamar Highway to a point 1.63 kilometres south of the Lady Nelson Creek Bridge	2.05
(b) From the Lady Nelson Creek Bridge to the northern junction of John Lees Drive with the East Tamar Highway	3.90

*Roads and Jetties Act 1935 – Proclamation
Statutory Rules 2024, No. 51*

sch. 3

**SCHEDULE 3 – EAST TAMAR HIGHWAY – PLACES
OF ACCESS**

	Description	Location
		Distance in kilometres from centre of Barnards Creek Bridge
1.	John Lees Drive (south) – West Side	0.97
2.	John Lees Drive (on ramp) – West Side	1.31
3.	John Lees Drive (north) – West Side	8.29
4.	Magazine Road – East side	10.62
5.	Windemere Road – West side	10.66

Roads and Jetties Act 1935 – Proclamation
Statutory Rules 2024, No. 51

Printed and numbered in accordance with the *Rules Publication Act 1953*.

Notified in the *Gazette* on 18 September 2024.

This proclamation is administered in the Department of State Growth.

EXPLANATORY NOTE

(This note is not part of the proclamation)

This proclamation –

- (a) declares a certain portion of the East Tamar Highway to be a limited access road; and
- (b) declares that certain portions of the East Tamar Highway cease to be limited access roads; and
- (c) amends a prior proclamation (S.R. 1979 No. 153) by –
 - (i) amending the definition of a portion of the limited access road for the East Tamar Highway; and
 - (ii) omitting a certain Schedule from that proclamation concerning places of access for the East Tamar Highway; and

Roads and Jetties Act 1935 – Proclamation
Statutory Rules 2024, No. 51

- (d) declares portions of certain roads to be places of access for the East Tamar Highway; and
- (e) revokes a certain spent proclamation.